

Pre-configured DRPC-120-QGW



Quick Start Guide

Welcome!

Thank you for choosing the pre-configured DRPC-120-QGW. You can set up the DRPC-120-QGW in 3 simple steps and enjoy the powerful services.



Step 1.
Hardware installation



Step 2.
Power on the system

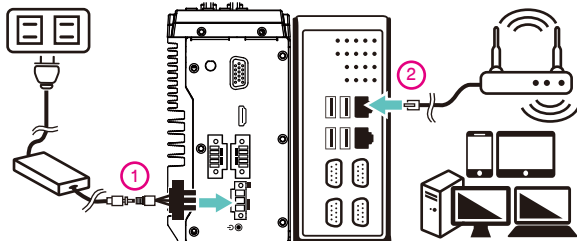


Step 3.
Start using the system



Hardware installation

1

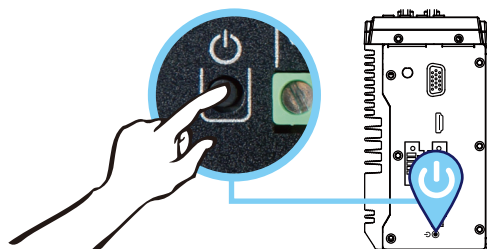


- 1) Plug-in the power cord.
- 2) Connect the DRPC-120-QGW's network cable and make sure the DRPC-120-QGW, PC or your home media devices are connected to the same network or router.



Power on the system

2



Press the power button on the front panel of the DRPC-120-QGW. It will take around 3 minutes to start up.



Start using the system

3

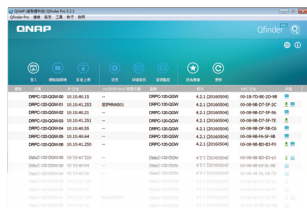


- 1) Download the utility directly by using the following link.

<http://www.qnap.com/utility>

Click Qfinder to download and install the Qfinder utility on your computer.

- 2) Run Qfinder to find your DRPC-120-QGW on the same network. Double click the name of the DRPC-120-QGW to connect to the web administration page and follow the instruction to run the installation process.



- 3) Enter the default login name and password

User name: admin

Password: admin



Congratulations! Your DRPC-120-QGW is now ready to use.