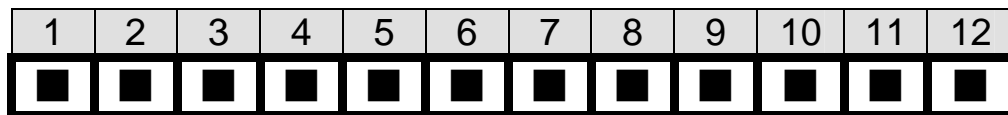


BP-7S-RS-R40

7-Slot Backplane with 7 ISA Bus User Manual Ver. 4.0

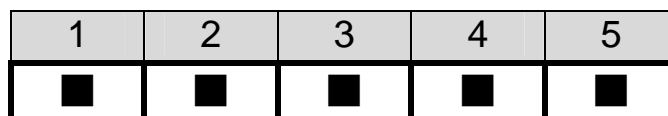
1. PW1: AT Power Connector

Pin	Description	Pin	Description
1	PWRGD	7	GND
2	+5V	8	GND
3	+12V	9	-5V
4	-12V	10	+5V
5	GND	11	+5V
6	GND	12	+5V



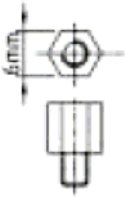
2. CN1: Voltage Connector

Pin	Description
1	+5V
2	-5V
3	-12V
4	+12V
5	GND



3. Notice:

- a. Recommend to use 6mm width spacer to install



- b. Torsion must less than 6lb-inch

4. Dimension:

