

3.5" SBC AMD Geode LX800 with CRT, LCD/LVDS, Dual
LAN and SATA

WAFER-LX-800

Quick Installation Guide

Version 1.1

May. 19, 2006

Package Contents

WAFER-LX-800 package includes the following items:

- 1 x WAFER-LX-800 SBC
- 1 x IDE Cable 44p/44p P/N: 32200-000009-RS
- 1 x SATA Power cable P/N: 32100-088600-RS
- 2 x SATA Cable P/N: 32000-0628000-RS
- 1 x Audio Cable P/N: 32000-072100-RS
- 1 x PS/2 KB/MS Cable P/N: 32000-023800-RS
- 1 x USB cable for 2 ports P/N: 32000-070300-RS
- 1 x RS232/422/485 Cable P/N: 32200-026500-RS
- 1 x mini jumper
- 1 x Utility CD
- 1 x QIG (quick installation guide)

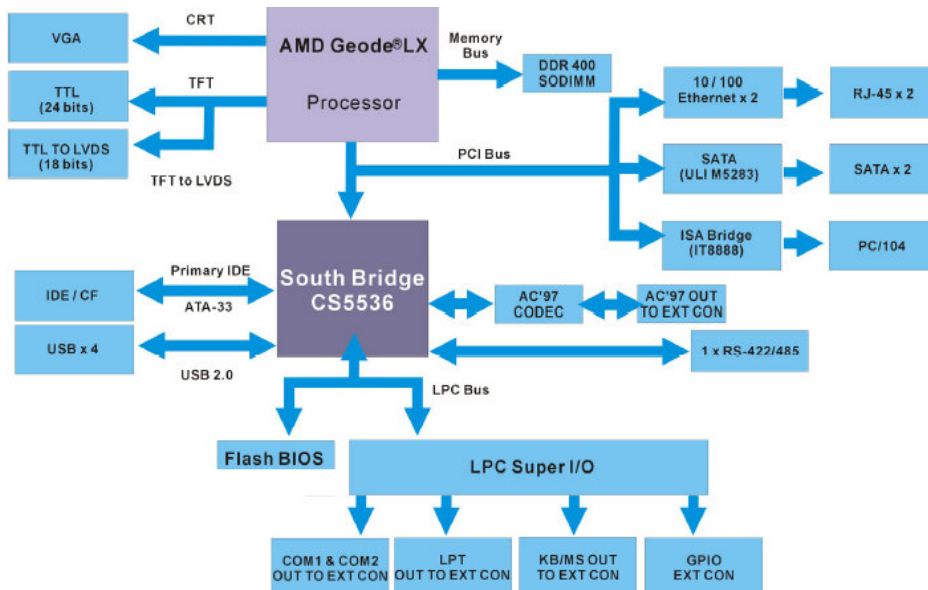
If any of these items is missing or damaged, contact the dealer from whom you purchased this product. Save the shipping materials and carton in case you want to ship or store the product in the future.



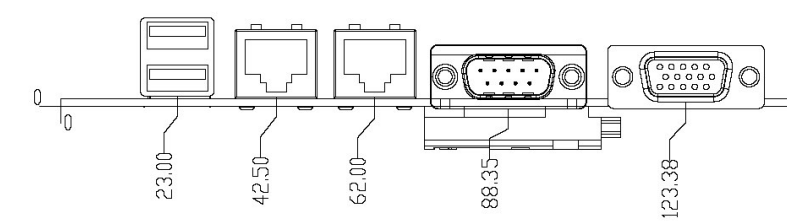
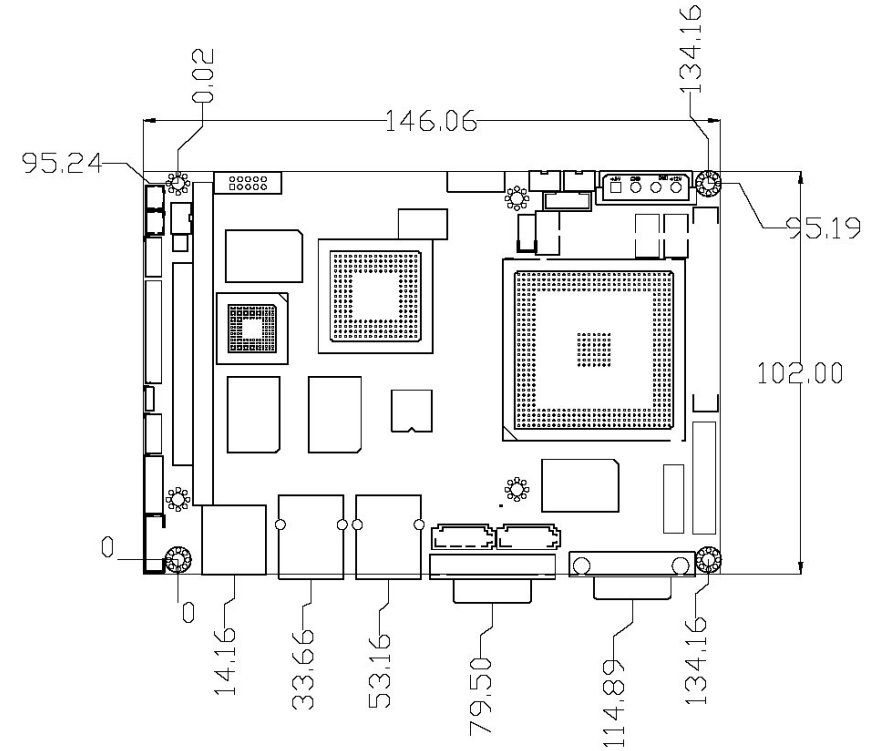
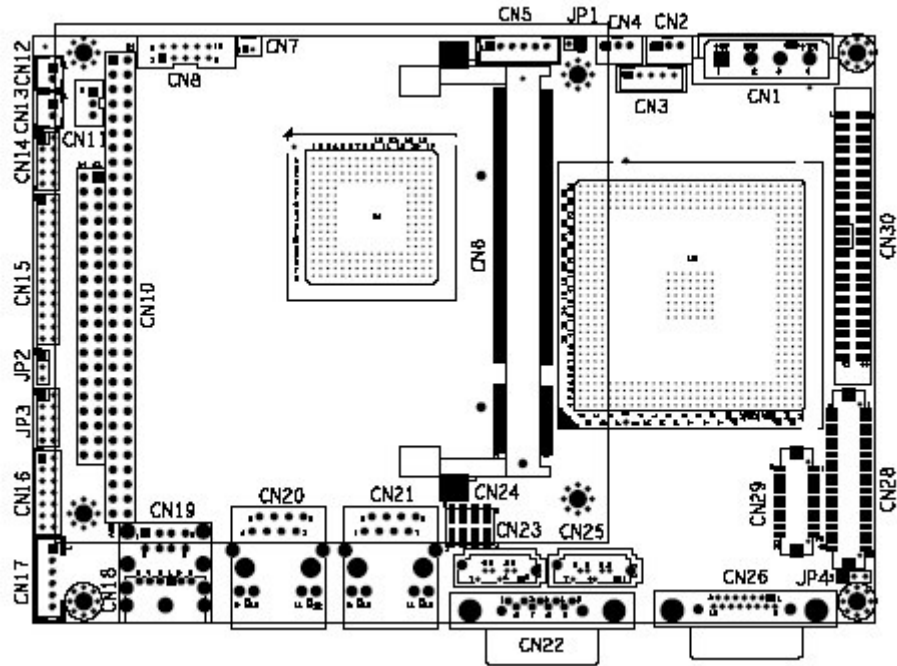
©2006 Copyright by IEI Technology corp.
All rights reserved.

Specifications

- CPU: AMD LX800 500Mhz
- BIOS: Award 4MB Flash Memory
- Chipset: AMD LX800 + CS5536
- System memory: One 200-pin SO-DIMM socket support up to 1GB DDR400 SDRAM
- SATA/IDE interface: Support Two Serial SATA hard drives and two enhanced IDE devices
- Serial ports: Two Serial ports (RS232), One RS232/422/485
- Parallel port: One parallel port, supports SPP/EPP/ECP Modes
- Keyboard/Mouse connector: PS/2 type keyboard and mouse
- Watchdog timer: software programmable by supper I/O
- USB 2.0: Support up to Four ports
- Video output:
 - CRT: Support up to 1920x1400x 32bit @85Hz
 - LCD: 24-bit TTL/18-bit LVDS
- Ethernet: Dual Realtek 8100C 10/100Mbps
- Audio: AC97 Codec



Jumper Setting



JP1 : AT Power select jumper	
ON	Use AT Power (if use ATX Power will be auto power on)
Default	
OFF	Use ATX Power

JP4 : LCD Vcc select (Default 1-2)	
1-2	LCD_VCC is +3.3V
2-3	LCD_VCC is +5V

JP2 : COM-3 RS422/485 function select jumper	
1-2	RS-422
2-3	RS485
Default	

JP3 : COM-1 , COM-2 RI Pin signal select			
Pin	Description	Pin	Description
1-3	COM-1 Pin-9 is +12V Output	2-4	COM-2 Pin-9 is +12V Output
3-5	COM-1 Pin-9 is +5V Output	4-6	COM-2 Pin-9 is +5V Output
5-7		6-8	
7-9	COM-1 Pin-9 is RI signal input	8-10	COM-2 Pin-9 is RI signal input
Default		Default	

CN1 :Main power input connector	
Pin	Description
1	+5V
2	GND
3	GND
4	+12V

CN2:Suspend power input & AT-Power select jumper connector	
Pin	Description
1	+5VSB
2	NC (V1.10)
3	PSON#

CN3 :LCD Invert connector	
Pin	Description
1	ADJ (Def : GND)
2	GND
3	+12V
4	GND
5	BL_EN

CN4 :System FAN connector	
Pin	Description
1	SPDCLK
2	+5V
3	GND

CN5 :LED Connector	
Pin	Description
1	+5V
2	GND
3	Power LED+
4	Power LED-
5	HDD LED+
6	HDD LED-

CN11:PC104 -5V/-12V power input connector	
Pin	Description
1	-5V
2	GND
3	-12V

CN8 :Audio connector			
Pin	Description	Pin	Description
1	LINE_OUT-R	2	LINE_IN-R
3	GND	4	GND
5	LINE_OUT-L	6	LINE_IN-L
7	GND	8	GND
9	MIC IN	10	N/C

CN12:Reset button connector	
Pin	Description
1	GND
2	RESET#

CN13:ATX Power button connector	
Pin	Description
1	PWRBTN#
2	GND

CN14:GPIO connector			
Pin	Description	Pin	Description
1	GND	2	+5V
3	GPO0	4	GPO1
5	GPO2	6	GPO3
7	GPI0	8	GPI1
9	GPI2	10	GPI3

CN15:Print port connector			
Pin	Description	Pin	Description
1	STB#	2	AFD#
3	PD0	4	ERR#
5	PD1	6	INIT#
7	PD2	8	SLIN#
9	PD3	10	GND
11	PD4	12	GND
13	PD5	14	GND
15	PD6	16	GND
17	PD7	18	GND
19	ACK#	20	GND
21	BUSY	22	GND
23	PE	24	GND
25	SLCT	26	NC

CN16:COM-2/3 cable connector			
Pin	Description	Pin	Description
1	DCD#	2	DSR#
3	RxD	4	RTS#
5	TxD	6	CTS#
7	DTR#	8	RI# / Vout
9	GND	10	GND
11	TxD485+	12	TxD485-
13	RxD485+	14	RxD485-

CN17:PS2 Keyboard / Mouse connector	
Pin	Description
1	+5V
2	MSDATA
3	MSCLK
4	KBDATA
5	KBCLK
6	GND

CN28:TFT LCD TTL output connector (DF13 40pin)			
Pin	Description	Pin	Description
2	LCD_VCC	1	LCD_VCC
4	GND	3	GND
6	LCD_VCC	5	LCD_VCC
8	GND	7	NC
10	B1	9	B0
12	B3	11	B2
14	B5	13	B4
16	B7	15	B6
18	G1	17	G0
20	G3	19	G2
22	G5	21	G4
24	G7	23	G6
26	R1	25	R0
28	R3	27	R2
30	R5	29	R4
32	R7	31	R6
34	GND	33	GND
36	VSYNC	35	CLK
38	HSYNC	37	LCD_EN
40	DISP_EN	39	NC

CN29:TFT LCD LVDS output connector (DF14 20pin)			
Pin	Description	Pin	Description
2	GND	1	GND
4	D0-	3	D0+
6	D1-	5	D1+
8	D2-	7	D2+
10	CLK-	9	CLK+
12	NC	11	NC
14	GND	13	GND
16	NC	15	NC
18	LCD_VCC	17	LCD_VCC
20	LCD_VCC	19	LCD_VCC