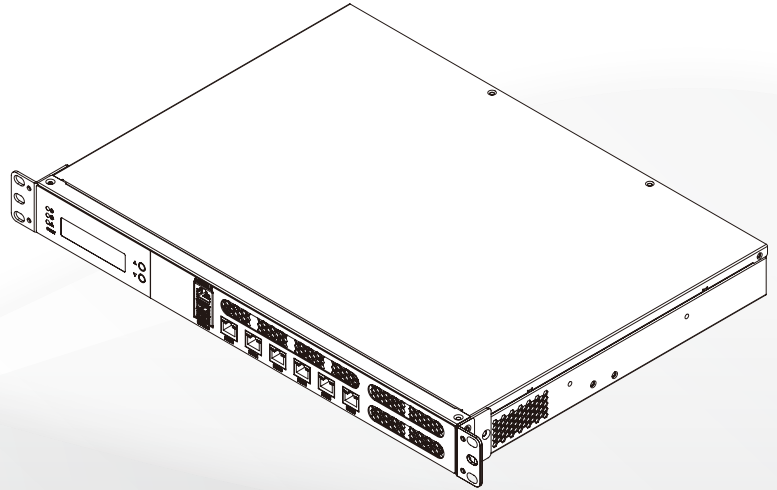


PUZZLE Series

PUZZLE-IN002



www.ieiworld.com

CPU Installation



WARNING:

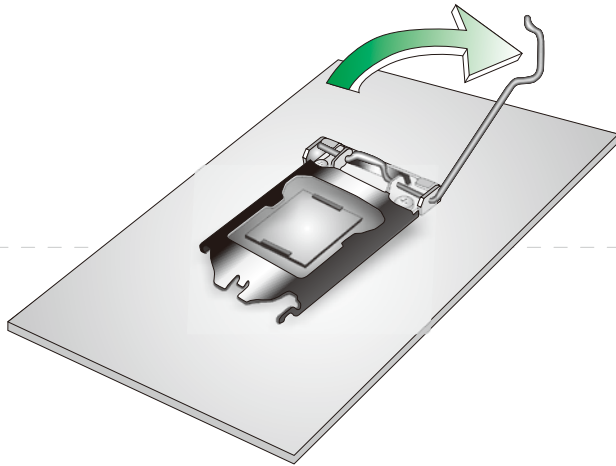
CPUs are expensive and sensitive components. When installing the CPU please be careful not to damage it in anyway. Make sure the CPU is installed properly and ensure the correct cooling kit is properly installed.

DO NOT touch the pins at the bottom of the CPU. When handling the CPU, only hold it on the sides.

To install the CPU, follow the steps below.

Step 1

Disengage the load lever by pressing the lever down and slightly outward to clear the retention tab. Fully open the lever.



Step 3

Inspect the CPU socket.

Make sure there are no bent pins and make sure the socket contacts are free of foreign material. If any debris is found, remove it with compressed air.

Step 5

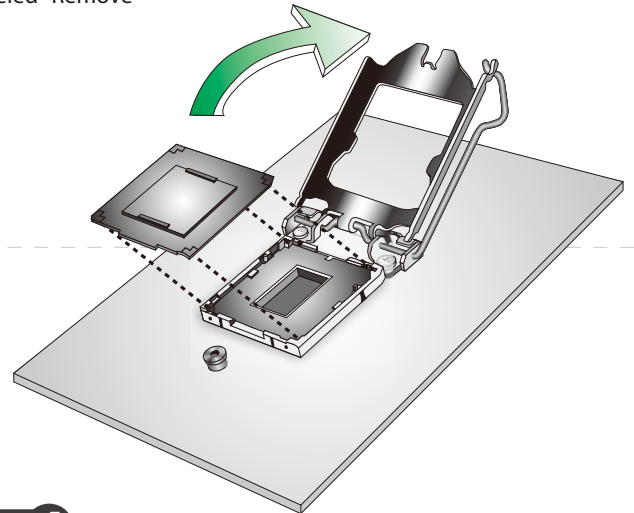
Correctly position the CPU.

Match the Pin 1 mark with the cut edge on the CPU socket.

Step 2

Open the socket and remove the protective cover.

The black protective cover can be removed by pulling up on the tab labeled "Remove"



Step 4

Orientate the CPU properly.

The contact array should be facing the CPU socket.

Step 6

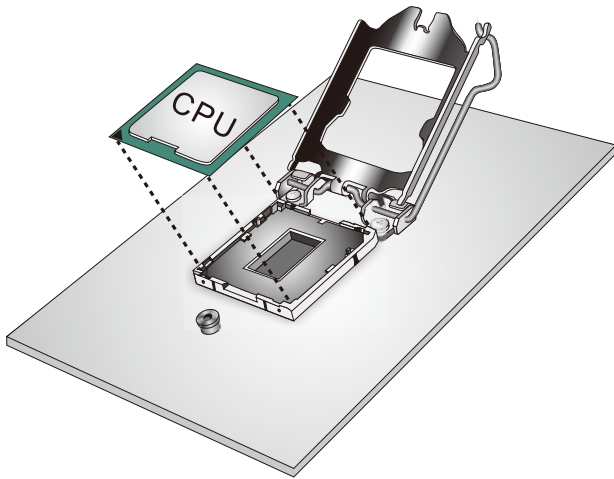
Align the CPU pins.

Locate pin 1 and the two orientation notches on the CPU. Carefully match the two orientation notches on the CPU with the socket alignment keys.

Step 7

Insert the CPU.

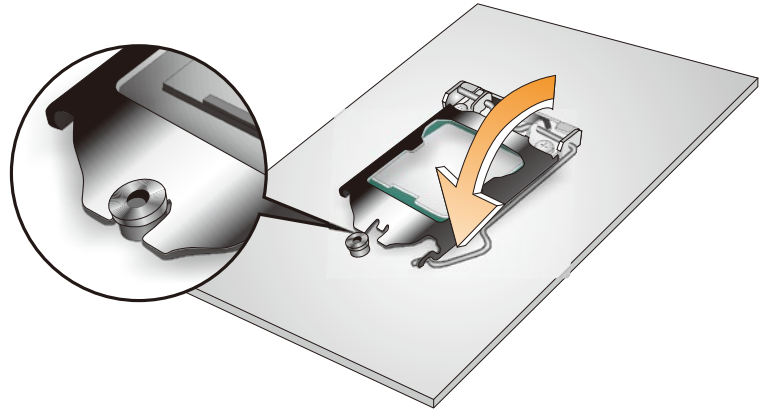
Gently insert the CPU into the socket. If the CPU pins are properly aligned, the CPU should slide into the CPU socket smoothly.



Step 8

Close the CPU socket.

Close the load plate and pull the load lever back a little to have the load plate be able to secure to the knob. Engage the load lever by pushing it back to its original position. There will be some resistance, but will not require extreme pressure.



CPU Heatsink Installation



WARNING:

Do not wipe off (accidentally or otherwise) the pre-sprayed layer of thermal paste on the bottom of the heat sink. The thermal paste between the CPU and the heat sink is important for optimum heat dissipation.

A CPU heatsink must be installed in the PUZZLE-IN001-R after the CPU installation. The CPU heatsink can be bought from IEI. To install the heatsink, follow the instructions below.

Step 1

A heatsink bracket is pre-installed on the rear of the motherboard.

Step 3

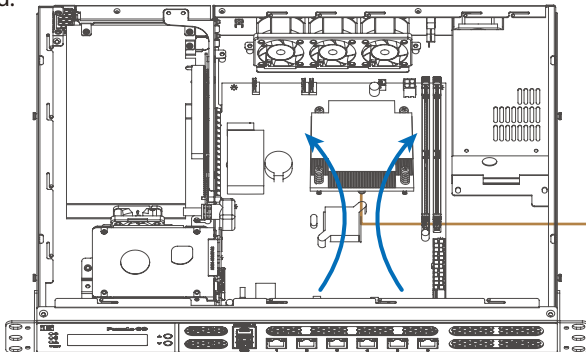
Place the CPU heatsink onto the CPU.

Push down the heatsink with some pressure to secure the heatsink with the support bracket.

Step 5

Install the hood.

Peel off the backing of the double-sided tapes attached inside the hood.



Step 2

Properly orient the CPU heatsink.

The CPU heatsink must be oriented so that thermal convection currents can carry the heat away from the heatsink.

Step 4

Tighten the screws.

Use a screwdriver to tighten the four screws. In a diagonal pattern, tighten each screw a few turns then move to the next one, until they are all secured. Do not overtighten the screws.

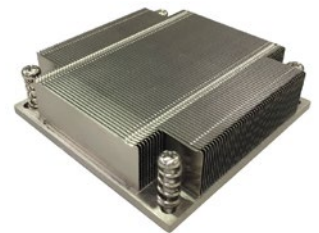
CPU heatsink

* A CPU heatsink must be purchased separately

35W
(34000-000731-RS)



80W
(34000-000722-RS)



威強電工業電腦 IEI Integration Corp.

No. 29, Zhongxing Rd., Xizhi Dist., New Taipei City 221, Taiwan
TEL : +886-2-86916798 / +886-2-26902098 FAX : +886-2-66160028
sales@ieiworld.com www.ieiworld.com

