

AFL4-W10-RK3568

IEI Light Industrial Panel PC

Powered by Rockchip RK3568 Platform



WWW.IEIWORLD.COM



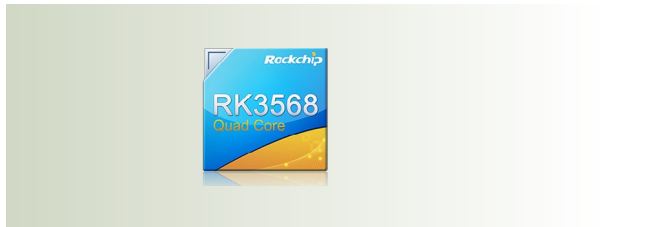
AFL4-W10-RK3568

Fanless panel PC with narrow bezel design, Rockchip RK3568 processor, onboard 4GB LPDDR4/4X, 32GB eMMC, HDMI2.0, two 1GbE RJ45, two USB2.0, two USB3.0, two RS-232 & two 485, Audio Jack, Option WIFI/BT and 4G/5G module, AG/UV 10-point touchscreen



Rockchip RK3568 SoC

Rockchip RK3568 chip quad-core Cortex A55 high-performance SoC, Mali G52 GPU & 1TOPS NPU



Support 4K UHF Display Output

HDMI2.0 Up to 10 bits Deep Color modes, Up to 4096x2304@60Hz



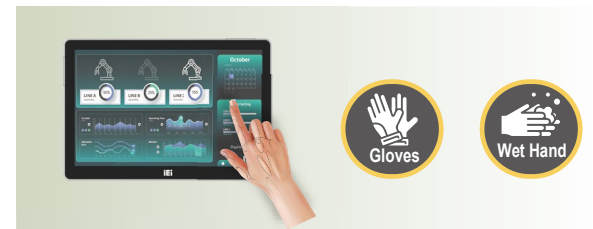
Anti-glare and Anti-UV PCAP

With anti-glare and anti-UV coating, the 10-point touchscreen can display clearly without reflection for a long time use in outdoors and bright light environment.



Works with Gloves and Water

The equipped capacitive touch screen supports gloved operation and waterproof function that can effectively eliminate false touch operating caused by water spray.



Extensive I/O Interfaces

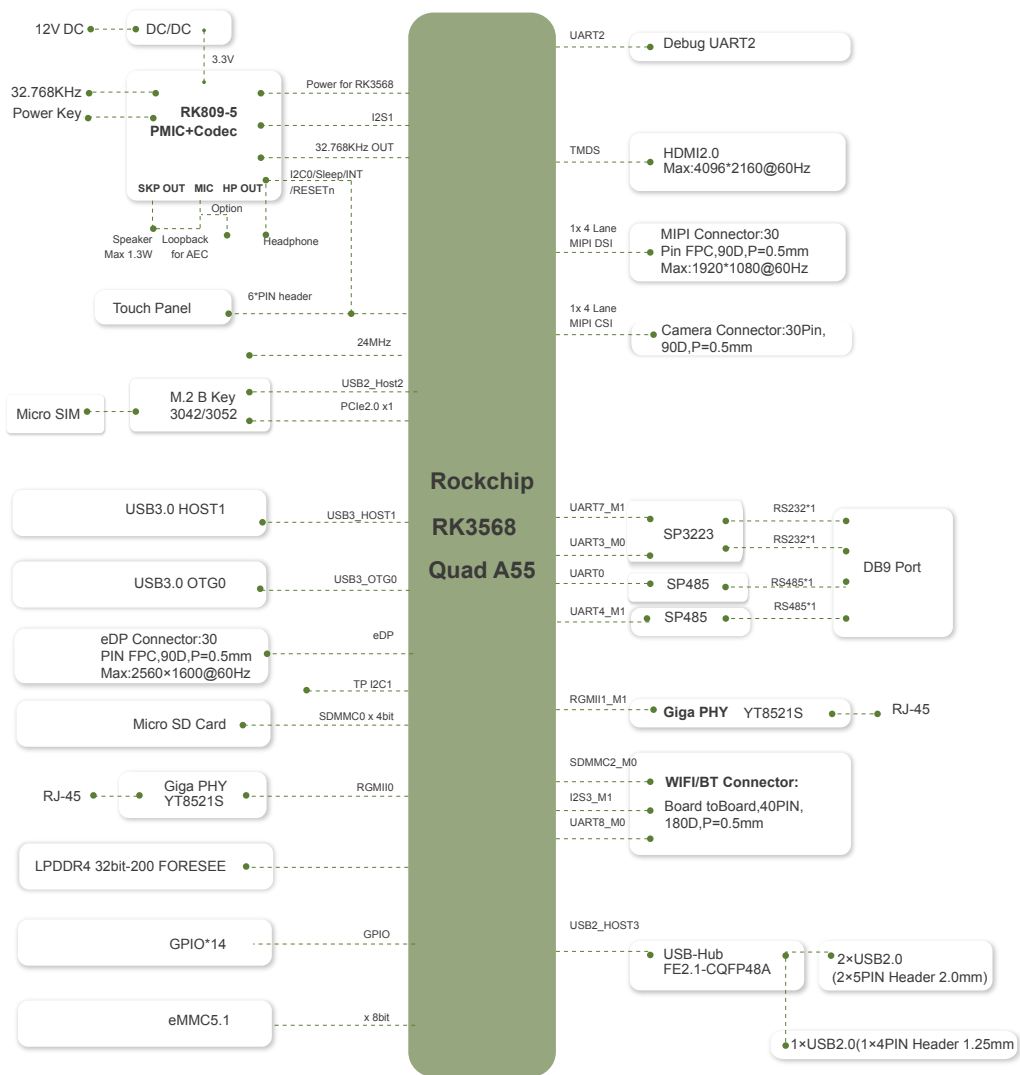
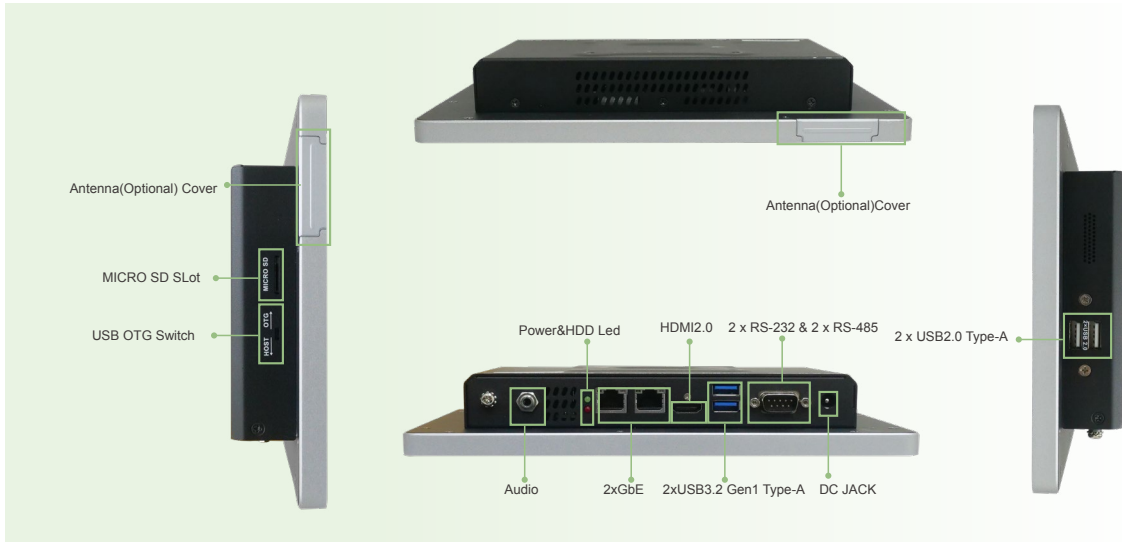
2xUSB3.0 Type A, 2xUSB2.0 Type A, 2xRS-232 & 2x485 by DB9 Port, 2x1GbE RJ45, HDMI2.0, Audio Jack, Micro SD Slot, internal M.2 B Key Slot support 4G/5G Module.



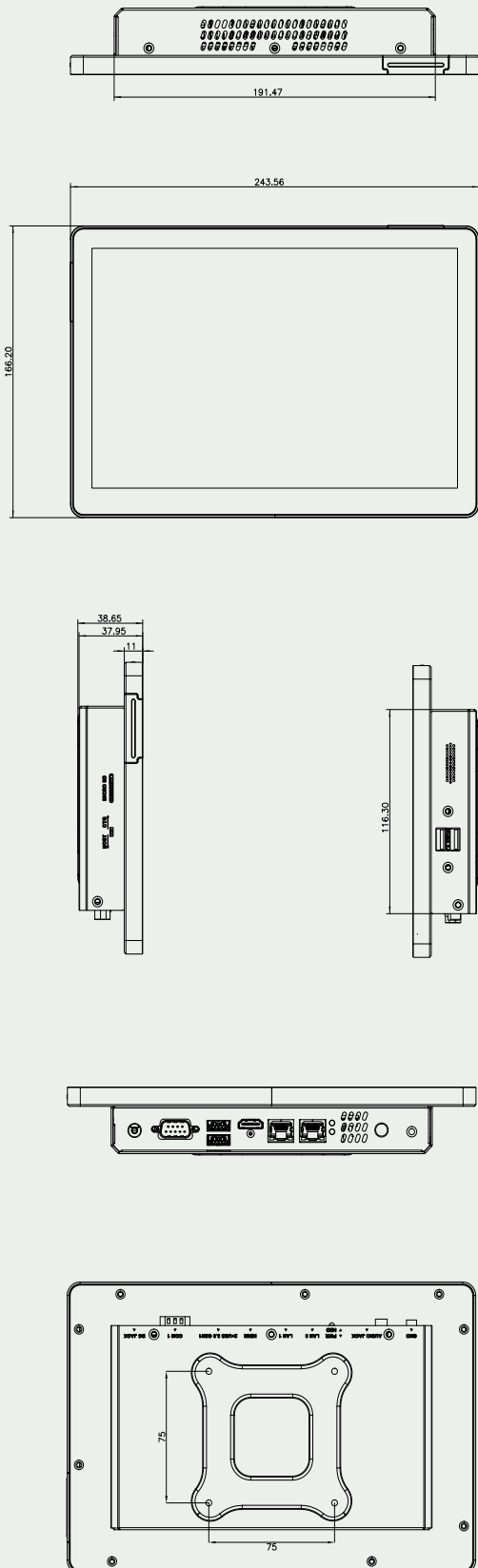
WiFi5/WiFi6&BT5.0 and 4G/5G module Support optional

Wireless network communication is achieved through two front internal antennas with wifi5/6+bluetooth module or 4/5G module.





Dimensions (Unit: mm)



Specifications

Model	AFL4-W10-RK3568	
LCD	Size	10.1" (16:10)
	Resolution (WxH)	1280 x 800
	Brightness (cd/m ²)	420
	Contrast Ratio	1000:1
	Viewing Angle (H-V)	160°/160°
	Backlight MTBF	30000 hours
Touch	Touch Type	PCAP with USB interface (anti-UV/AG coating)
	Touch IC	EETI EXC81 Series
Mainboard	SOC	Rockchip® RK3568 (Quad-core Cortex-A55, up to 2.0 GHz)
	RAM	4GB LPDDR4/4X, Up to 8GB
	ROM	32GB eMMC NAND FLASH
	Storage	1 x Micro SD Slot
I/O Ports	1x DB9 Port	2 x RS-232 & 2 x RS-485 by 1 x DB9
	USB3.0	2 x USB3.0 Type A(1× OTG, 1× HOST)
	HDMI	1 x HDMI2.0 output
	USB2.0	2 x USB2.0 Type-A
	RJ45	2 x 1GbE RJ45 By YT8521SC
	AUDIO	1 x Audio Jack (Mic-in&Lineout)
Speaker	AMP 1.3W (internal speaker)	
Wireless	WLAN	Wi-Fi 5/6 & BT5.0 (IEI wireless module optional)
	4/5G LTE	1 x 3042/52 B-key (PCIe Gen2 x1, USB2.0) 1 x On-board SIM card socket (hinge type) for M.2 B key
Physical	Body Material	Aluminum die casting+SECC
	Mounting	Wall, Stand, Arm, VESA 75
	Color	Silver+Black
Environment	Operating Temperature (°C)	-10°C ~ 50°C with air flow
	Storage Temperature (°C)	-20°C ~ 60°C
	Humidity	10% to 90%@40°C (non-condensing)
	IP Level	Front panel IP64
	Safety&EMC	CE/EMC , FCC
	Thermal Solution	Fanless
	Power	12V DC Jack
	Power Consumption	12V@2.25 (Rockchip® RK3568 with 4GB Memory, 32GB eMMC, Debian OS)
	Weight	1.18kg / 2.32kg
	OS	Supported OS
Watchdog Timer		YES

Packing List

Item	Q'ty
Power cord (EUROPEAN CODE) (32702-000202-100-RS)	1
Power Adapter (63040-410060-000-RS)	1
QIG	1

Ordering Information

Part No.	Description
AFL4-W10-RK3568-R10	10.1" 420cd/m ² 1280x800 fanless Panel PC with RK3568 on-board Processor , 4GB LPDDR4 on-board , 32GB Emmc,Option:802.11a/b/g/n/ac/ax WiFi&Bluetooth@5.2 module, PCAP touch,Debian10 OS,R10
AFL4-W10-RK3568-A-R10	10.1" 420cd/m ² 1280x800 fanless Panel PC with RK3568 on-board Processor , 4GB LPDDR4 on-board , 32GB Emmc,Option:802.11a/b/g/n/ac/ax WiFi&Bluetooth@5.2 module, PCAP touch,Android12 OS,R10

Options

Item	Part No.	Description
Arm	ARM-11-RS	VESA 75/100 Desk Arm
Stand	STAND-C12-R10	VESA 75/100 Easy Stand
WIFI Module	iWB-AP6275SDSR-IA-R10	WiFi+Bluetooth Module, AP6275SDSR, 2T2R, 802.11 a/b/g/n/ac/ax Wi-Fi + BT 5.3, with Internal WIFI 6 antenna, FCC/CE/NCC