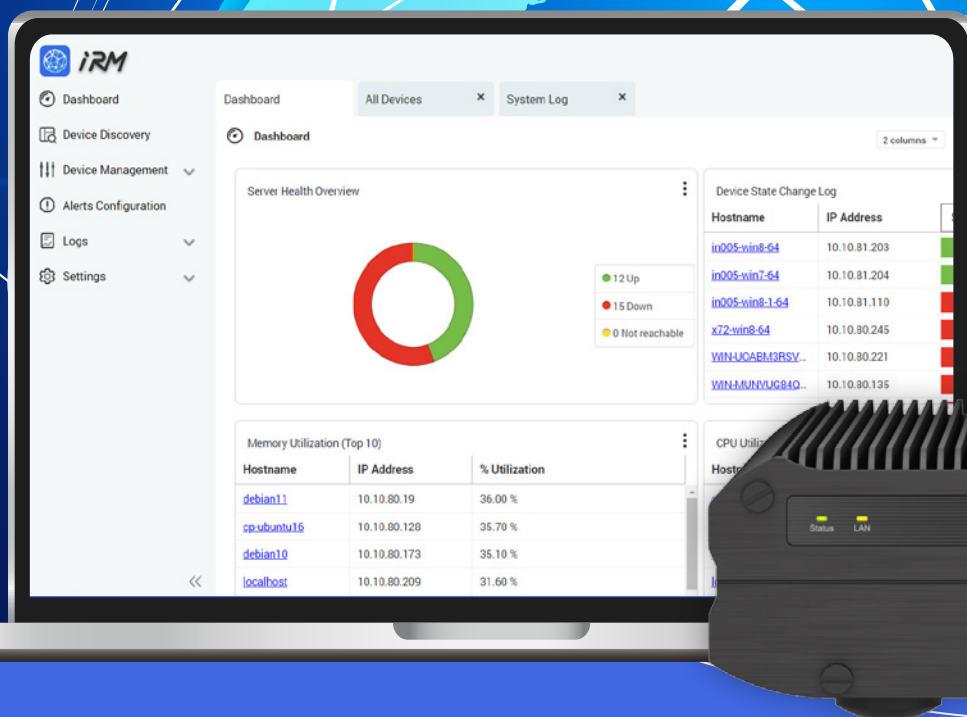


Centralized System Monitoring Solution

Centralized Monitoring Solution for Industrial PC to simplify OT daily operation , and increasing service availability in Edge Side



Multi OS Support



Auto Alert



RAID 1 Protect



Wide temperature



What is iRM ?

iRM is IEI's Centralized Remote Management Solution designed for OT/IT Teams for Industry PC. It provides single point solution to monitor all the Critical IPC such as Industrial Servers/IPC/vIPC in OT network. iRM helps to easily monitor your OT/IT infrastructure worldwide through single interface within fraction of time.

What is the benefit ?

- To decrease OT Workload device monitoring effort in operation and increased system Availability
- Detect underlying problems before control system have an adverse effect
- Detect problems that affect a user's productivity
- Collect data when a problem occurs for the first time
- Allow you to establish a baseline for comparison and alert
- Allow you to store your data in edge side



Efficient Management & Trouble shooting

Seamless monitoring, centralized control of managed applications



Improved Availability

Quick issue diagnosis for device accessibility and reduced downtime.



Secure Server Platform

Wide-temp mini server with pre-installed OS and one-click OS recovery



Enhanced Data protection

Wide selection of RAID



Cross-platform Capabilities

Full compatibility with any x86 platform



Customizable Email Alerts

Tailored Email notifications



For detail to check
online user manual

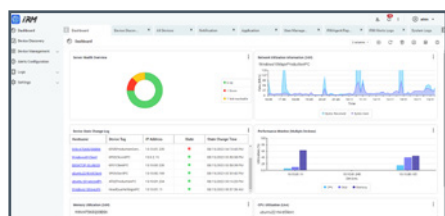


iRM Software Specifications

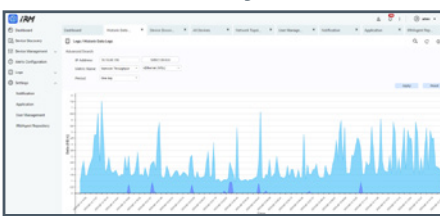
Main Features	Sub Features
Dashboard and Widget (user defined dashboard by system build-in widget)	CPU Utilization Memory Utilization Disk Utilization Disk Volume Live Information Disk Throughput Network Utilization Device Health Overview State Change Log Shutdown Devices (Recent 10) Performance Monitor (Multiple Devices) Performance Monitor (Single Devices) Export to PDF Export and email as PDF document
Device Discovery (add your client device in iRM platform through network)	Device Discovery by network Add Device Search Device
Device Management	Single and Multi Device Management Page <ul style="list-style-type: none"> • Export PDF • Email as PDF • Add Device • Delete Device Remote Power Control Remote Desktop Network Topology View
Alert Configuration	CPU Utilization Memory Utilization Disk Utilization Power Status
Logs	iRM Alerts Log System Log Historic Data Log Query
Settings	Notification Settings Application Settings User Management: system admin, OT power user iRM Agent Repository Download
Monitored Client OS Support	<ul style="list-style-type: none"> • Window® 32-Bit: Window® 7, Windows® 8/8.1 • Window® 64-Bit: Windows® 7, Windows® 8/8.1, Windows® 10, Windows® 11, Windows® Server 2012, Windows® Server 2016, Windows® Server 2019, Window® Server 2022 • Ubuntu 64-Bit: Ubuntu 16.04, Ubuntu 18.04, Ubuntu 20.04, Ubuntu 22.04 • Debian 64-Bit : Debian 8, Debian 9, Debian 10, Debian 11 • CentOS 64-Bit: CentOS 7
Software Standard Warranty and Support	1 Year

Simple and Intuitive Web-Based Portal

Device Health Status Dashboard



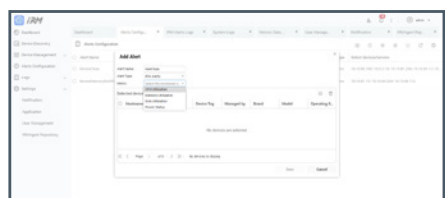
Historic Data Query



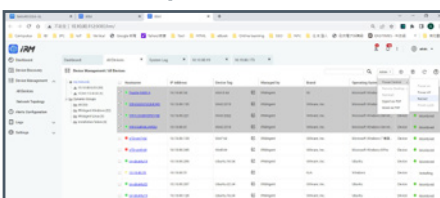
Network Topology View



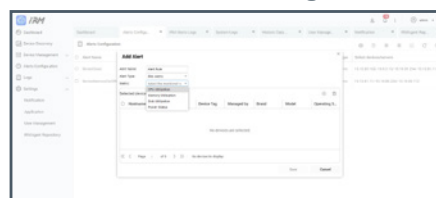
Add Alert Rule



Device Group Control

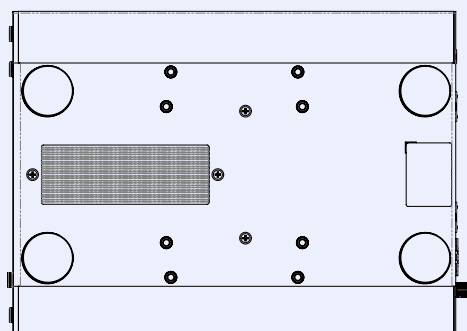
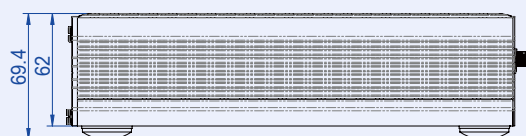
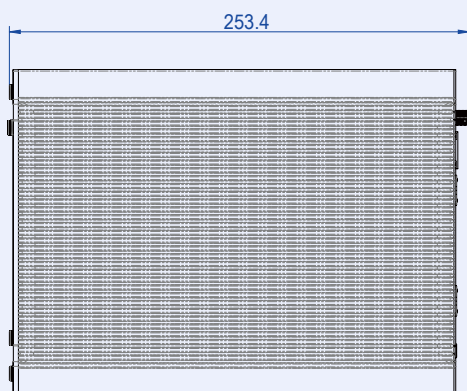
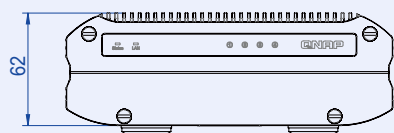


Notification Mail Setting





Hardware Dimensions (Unit:mm)



iRM Mini Server Appliance Specifications

Model		iRM-TSi410X
Chassis	Color	Black
	Dimensions (H x W x D)	65 x 180 x 254 mm (2.56 x 7.09 x 10 in)
	Fan/Fanless	Fanless
Processor	CPU	Intel® Atom® x6425E
	Frequency	4-core/4-thread 2.0 GHz base/3.0 GHz burst
	Encryption engine	AES-NI
	Graphics	Intel® UHD Graphics for 10th Gen Intel® Processors
Memory	Pre-installed	8 GB RAM
	Maximum	8 GB RAM
	Flash memory	4 GB (dual-boot OS protection)
Storage	Drive bays	4 x 2.5-inch SATA 6 Gbps
	Hot-swapping	This device supports hot-swapping for all drives.
	Pre-installed SSD/HDD	2 x 2.5-inch 512GB SATA SSD with RAID 1 (Required optional storage)
	RAID	Support RAID 1 / 5 / 6 / 10
Network	10 Gigabit network interface	2 x 10G BASE-T (10G/5G/2.5G/1G)
External I/O Ports & Expansion Slots	USB ports	4 x USB 3.2 Gen 2 Type-A
	HDMI ports	1 x HDMI 1.4b (up to 3840 x 2160 resolution at 30Hz)
Interface	Buttons	Power / Reset
Power	Power supply unit	1. External power adapter 90W and above, 100-240V AC 2. 9-36V DC input
	System battery	CR2032 lithium battery (3V, 225 mAh)
Relative humidity	Relative humidity	• Non-condensing relative humidity: 5% to 95% • Wet-bulb temperature: 27°C (80.6°F)
Package	Package Dimensions	290 x340 x195 mm (11.42 x 11.39 x 7.68 in)
Reliability	Operating Temperature	-40°C to 70°C (-40°F to 158°F)
	Storage Temperature	-45 - 85°C (-49°F - 185°F)
	Relative Humidity	5-95% RH non-condensing, wet bulb: 27°C (80.6°F)
Mount	Mount support	• VESA mount: 75 x 75 mm (2.95 x 2.95 in) • Load bearing: > 15 kg (33.07 lbs) • M4x6 screws • Hole depth: 7.5 mm (0.26 in) • Tooth depth: 5 mm (0.20 in)
Weight	Net weight	2.54 kg (5.6 lbs)
	Gross weight	3.85 kg (8.5 lbs)
Safety / EMC		CE / UKCA / FCC / VCCI-B / BSMI
Hardware Standard Warranty		3 Years
Pre-install Application		IRM (IEI Remote Management)

Ordering Informaton

Model	Description
IRM-TSi410X-8G2H-R10	Ruggedized Fanless iRM Mini Server with IRM application, QTS OS, Intel® Atom® x6425E 4-core/4-thread, 8GB RAM, 4 x Drive Bay, 1 x HDMI, 9-36V DC and RoHS

Notes: The required optional storage is necessary in ordering

Required Optional Storage

Part No	Description
79700-G51201TC09-RS	512 GB 2.5 inch SATA3 industrial grade SSD, Operational Temperature: -20°C to 75°C
79700-G51201AP05-RS	512 GB 2.5 inch SATA3 standard grade SSD, Operational Temperature: 0°C to 70°C

Notes: The required optional storage ordering quantity must be 2 for RAID 1

Packing List

1 x iRM Mini Server	1 x AC power adapter
1 x Ethernet cable (RJ45)	16 x Screws for 2.5-inch drives
1 x Hardware Quick Installation Guide (QIG)	1 x iRM Software Quick Setup Guide (QSG)