

PICMG 1.3 Passive Backplane

Selection Guide

PAC series wall-mount chassis
4U/5U rack-mount chassis
1U/2U rack-mount chassis

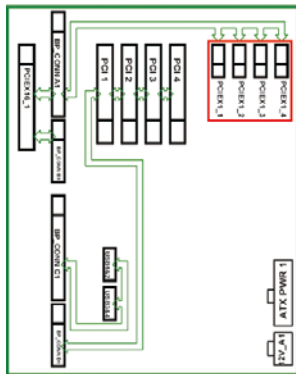
PICMG 1.3 (PCIe+PCI)	Model	PE-2SD1	PE-3S1	PE-4S	PE-5S	PE-5S2	PE-6S	PE-6S2	PE-6SD	PE-6SD3
Total Slot		2	5	4	5	5	6	6	5	5
Expansion Slots	PCIe Slots	x16 * 1 (Gen 2.0)	1 (Gen 3.0)	1	1 (Gen 2.0)	1 (Gen 2.0)	1 (Gen 2.0)	1 (Gen 2.0)	1 (Gen 2.0)	1 (Gen 2.0)
		x4	1 (Gen 3.0)	1	1 (Gen 2.0)			1 (Gen 2.0)		1 (Gen 2.0)
		x1				3 (Gen 2.0)	2 (Gen 2.0)		3 (Gen 2.0)	
	PCI-X Slots									
	PCI Slots			1	2		2	3		2
USB Connectors by Pin Header		4		4	4	4	4	4	4	4
PSU Type		24+4-pin ATX	24+4-pin ATX	24+4-pin ATX	24+4-pin ATX	24+4-pin ATX	24+4-pin ATX	24+4-pin ATX	24+4-pin ATX	24+4-pin ATX
Chassis		RACK-1150-PE	RACK-500AI	N/A	N/A	N/A	RACK-305G RACK-360G RACK-3000G PAC-1700G PAC-125 G	PAC-106G PAC-1000G	N/A	N/A
Note		1U Type							2U Type	2U Type

PICMG 1.3 (PCIe+PCI)	Model	PE-7S	PE-8S	PE-9S	PE-10S	PE-10S2	PXE-13S
Total Slot		7	8	9	10	10	13
Expansion Slots	PCIe Slots	x16 * 1 (Gen 2.0)	1 (Gen 2.0)	1 (Gen 2.0)	1 (Gen 2.0)	1 (Gen 2.0)	1 (Gen 3.0)
		x4					
		x1	2 (Gen 2.0)	3 (Gen 2.0)	4 (Gen 2.0)	4 (Gen 2.0)	3 (Gen 3.0)
	PCI-X Slots						
	PCI Slots	3	3	3	4	4	8
USB Connectors by Pin Header		4	4	4	4	4	4
PSU Type		24+4-pin ATX	24+4-pin ATX	24+4-pin ATX	24+4-pin ATX	24+4-pin ATX	24+4-pin ATX
Chassis		PAC-1700G	PAC-125G	N/A	RACK-305G RACK-360G RACK-3000G	RACK-3000G RACK-305G RACK-360G	RACK-3000G RACK-305G RACK-360G
Note							PCIe to PCI Bridge Backplane

*When using a PCIe x16 add-on card, the length of the card must not exceed 167mm or 6.57 inches.

IEI Graphics Grade Backplane Solution

The graphics grade backplane solution targets the applications which concern system speed and performance. It has higher performance over cost ratio than the previous PICMG 1.0 solution.



PE-3S1

PE-4S

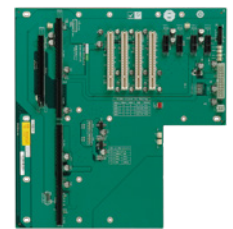
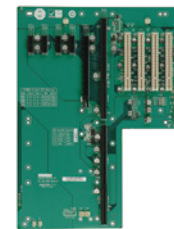
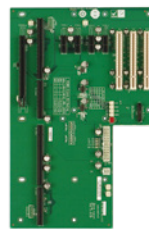
PE-5S

PE-6S2

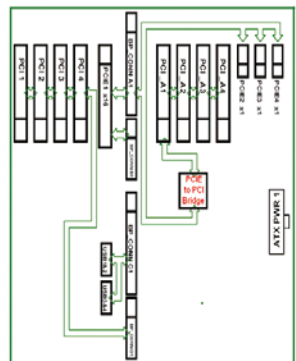
PE-9S

PE-10S

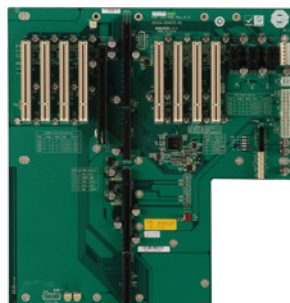
PE-10S2



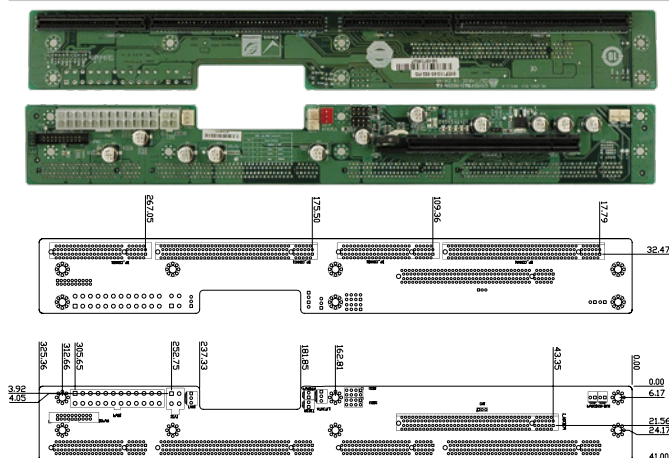
- Twenty PCIe lanes in total
- One PCIe x16 slot
- Up to four PCIe x1 or one PCIe x4 slot
- Up to four local PCI slots (w/o bridge)



PXE-13S



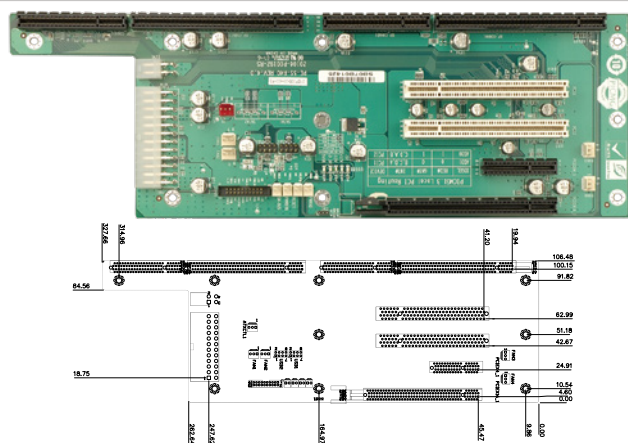
For 1U system!



PE-2SD1-R10	2-slot backplane with one PCIe slot (PCIe Gen 2.0)
RACK-1150G-PE	1U full-size rack-mount chassis

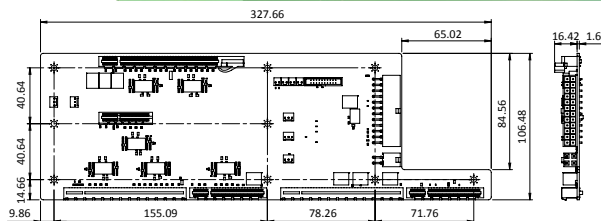
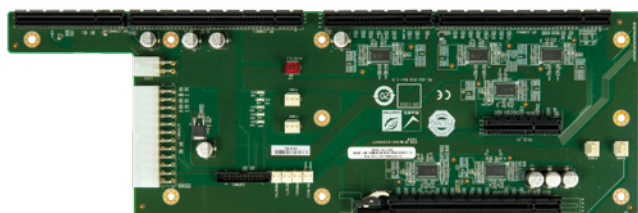
PE-5S-R40

**Mounting holes
compatible with PCI-5S**



PE-5S-R40	5-slot backplane with one PCIe x16 slot, one PCIe x4 slot and two PCI slots (PCIe Gen 2.0)
-----------	--

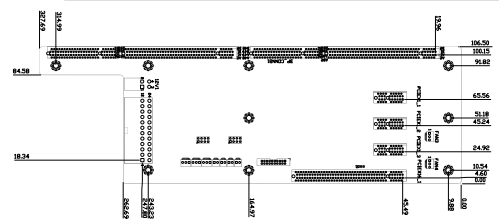
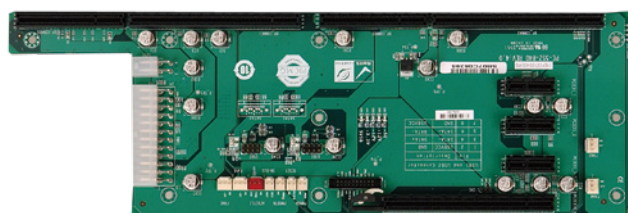
PE-3S1-R10



PE-3S1-R10	5-slot PICMG 1.3 backplane with one PCIe x16 slot and one PCIe x4 Slot, RoHS (PCIe Gen 3.0)
RACK-500AI	5U 5-slot full-size rackmount chassis

PE-5S2-R40

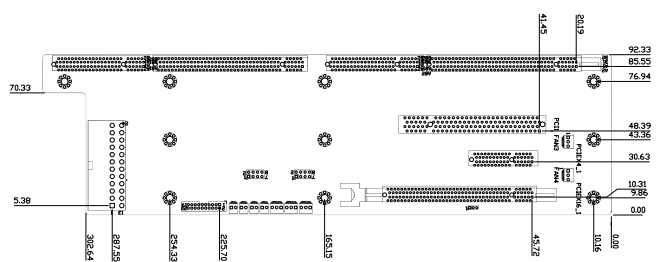
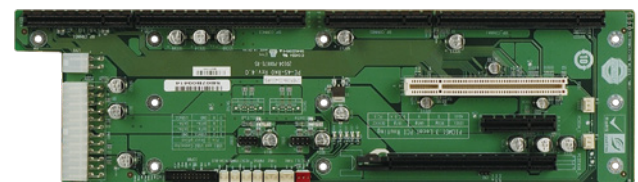
**Mounting holes
compatible with PCI-5S**



PE-5S2-R40	5-slot backplane with one PCIe x16 slot and three PCIe x1 slots(PCIe Gen 2.0)
------------	---

PE-4S-R40

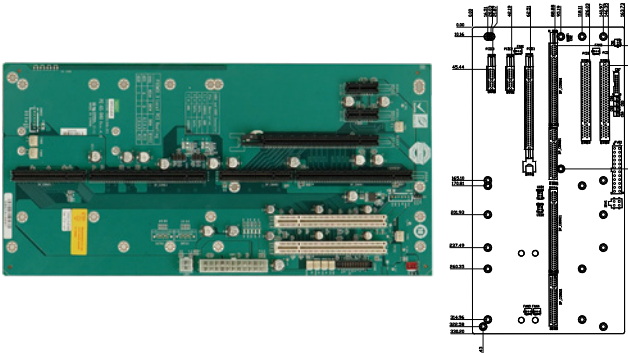
Mounting holes compatible with PCI-4S



PE-4S-R40	4-slot backplane with one PCIe x16 slot, one PCIe x4 slot and one PCI slot
-----------	--

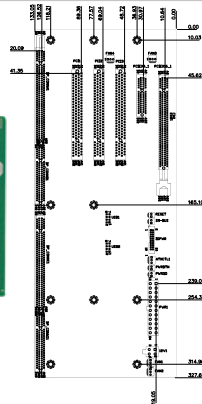
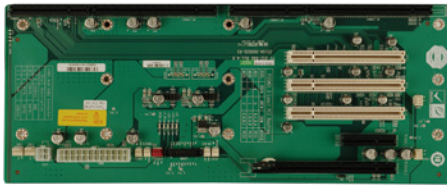
PE-6S-R41

**Mounting holes
compatible with PCI-7S**



PE-6S-R41	6-slot backplane with one PCIe x16 slot, two PCIe x1 slots and two PCI slots (PCIe Gen 2.0)
RACK-305G	4U 14-slot full-size rack-mount chassis
RACK-360G	4U 14-slot full-size rack-mount chassis
RACK-3000G	4U 14-slot full-size rack-mount chassis
PAC-1700G	7-slot full-size compact chassis
PAC-125G	10-slot full-size compact chassis

PE-6S2-R40

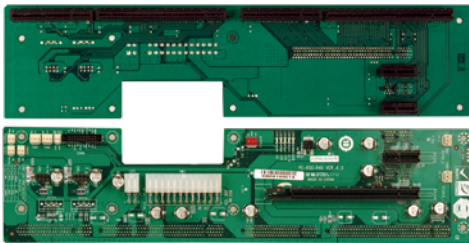
Mounting holes
compatible with PCI-6S

Ordering Information

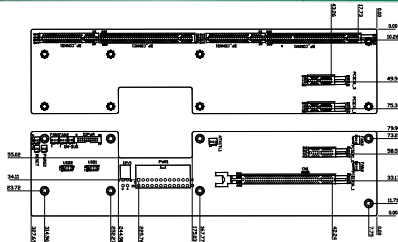
PE-6S2-R40	6-slot backplane with one PCIe x16 slot, one PCIe x4 slot and three PCI slots (PCIe Gen 2.0)
PAC-106G *	6-slot full-size compact chassis
PAC-1000G	6-slot full-size compact chassis

* When using a PCIe x16 add-on card, the length of the card must not exceed 167mm or 6.57 inches.

PE-6SD-R40

Mounting holes
compatible with PCI-6SD

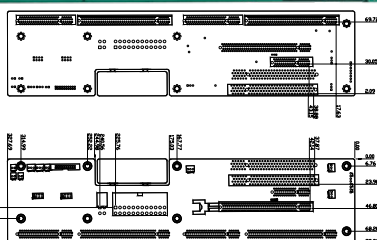
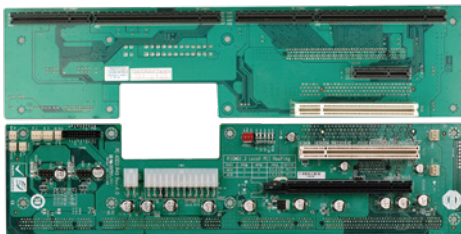
2U Type



Ordering Information

PE-6SD-R40	5-slot backplane with one PCIe x16 slot and three PCIe x1 slots (PCIe Gen 2.0)
------------	--

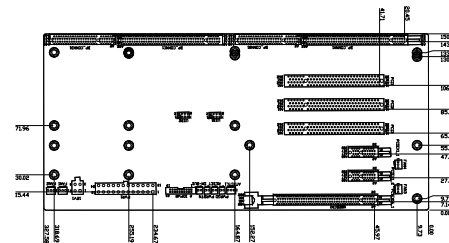
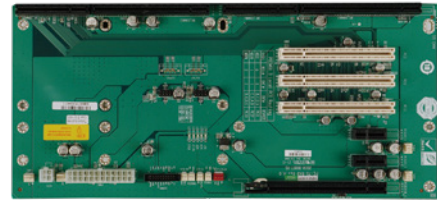
PE-6SD3-R40

Mounting holes
compatible with PCI-6SD

Ordering Information

PE-6SD3-R40	5-slot backplane with one PCIe x16 slot, one PCIe x4 slot and two PCI slots (PCIe Gen 2.0)
-------------	--

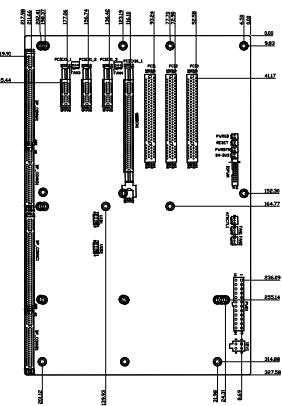
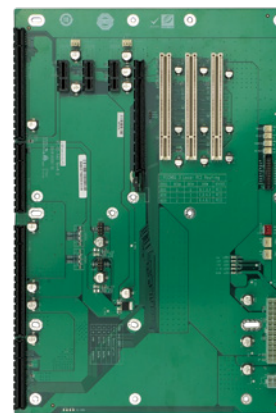
PE-7S-R40

Mounting holes
compatible with PCI-7S

Ordering Information

PE-7S-R40	7-slot backplane with one PCIe x16 slot, two PCIe x1 slots and three PCI slots (PCIe Gen 2.0)
PAC-1700G	7-slot full-size compact chassis

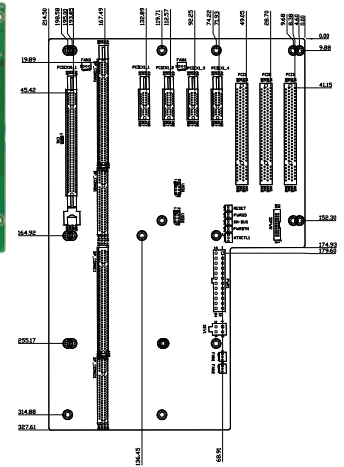
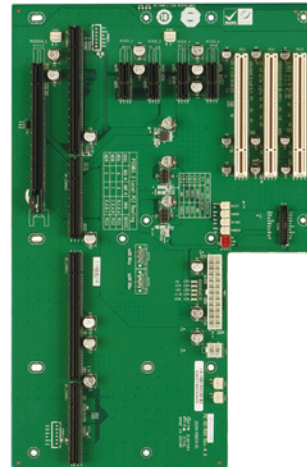
PE-8S-R40



Ordering Information

PE-8S-R40	8-slot backplane with one PCIe x16 slot, three PCIe x1 slots and three PCI slots (PCIe Gen 2.0)
PAC-125G	10-slot full-size compact chassis

PE-9S-R40

Mounting holes
compatible with PCI-10S2

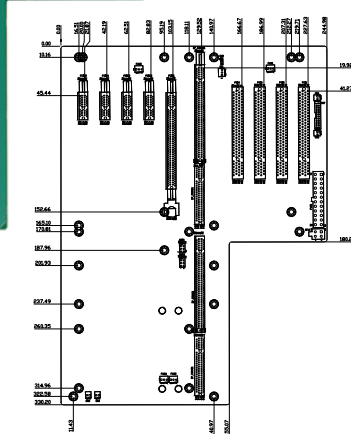
Ordering Information

PE-9S-R40	9-slot backplane with one PCIe x16 slot, four PCIe x1 slots and three PCI slots (PCIe Gen 2.0)
-----------	--

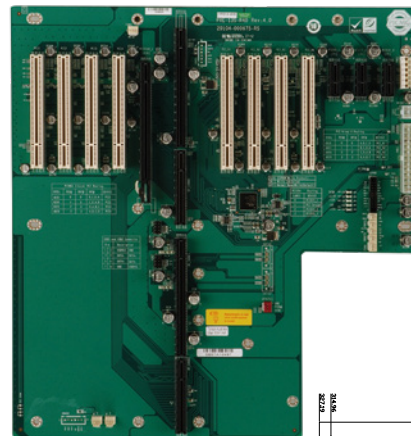
PXE-13S-R51

Figure 1 shows a photograph of a green printed circuit board (PCB) for a 3.5-inch floppy disk drive. The board features a 34-pin floppy disk controller (FDC) chip, a 16-bit parallel interface (PI) chip, and a 16-bit parallel interface (PI) chip. A table of component values is provided below the photograph.

Part	Value	Part	Value
1	10K	10	10K
2	10K	11	10K
3	10K	12	10K
4	10K	13	10K
5	10K	14	10K
6	10K	15	10K
7	10K	16	10K
8	10K	17	10K
9	10K	18	10K
10	10K	19	10K
11	10K	20	10K
12	10K	21	10K
13	10K	22	10K
14	10K	23	10K
15	10K	24	10K
16	10K	25	10K
17	10K	26	10K
18	10K	27	10K
19	10K	28	10K
20	10K	29	10K
21	10K	30	10K
22	10K	31	10K
23	10K	32	10K
24	10K	33	10K
25	10K	34	10K
26	10K	35	10K
27	10K	36	10K
28	10K	37	10K
29	10K	38	10K
30	10K	39	10K
31	10K	40	10K
32	10K	41	10K
33	10K	42	10K
34	10K	43	10K
35	10K	44	10K
36	10K	45	10K
37	10K	46	10K
38	10K	47	10K
39	10K	48	10K
40	10K	49	10K
41	10K	50	10K
42	10K	51	10K
43	10K	52	10K
44	10K	53	10K
45	10K	54	10K
46	10K	55	10K
47	10K	56	10K
48	10K	57	10K
49	10K	58	10K
50	10K	59	10K
51	10K	60	10K
52	10K	61	10K
53	10K	62	10K
54	10K	63	10K
55	10K	64	10K
56	10K	65	10K
57	10K	66	10K
58	10K	67	10K
59	10K	68	10K
60	10K	69	10K
61	10K	70	10K
62	10K	71	10K
63	10K	72	10K
64	10K	73	10K
65	10K	74	10K
66	10K	75	10K
67	10K	76	10K
68	10K	77	10K
69	10K	78	10K
70	10K	79	10K
71	10K	80	10K
72	10K	81	10K
73	10K	82	10K
74	10K	83	10K
75	10K	84	10K
76	10K	85	10K
77	10K	86	10K
78	10K	87	10K
79	10K	88	10K
80	10K	89	10K
81	10K	90	10K
82	10K	91	10K
83	10K	92	10K
84	10K	93	10K
85	10K	94	10K
86	10K	95	10K
87	10K	96	10K
88	10K	97	10K
89	10K	98	10K
90	10K	99	10K
91	10K	100	10K
92	10K	101	10K
93	10K	102	10K
94	10K	103	10K
95	10K	104</	

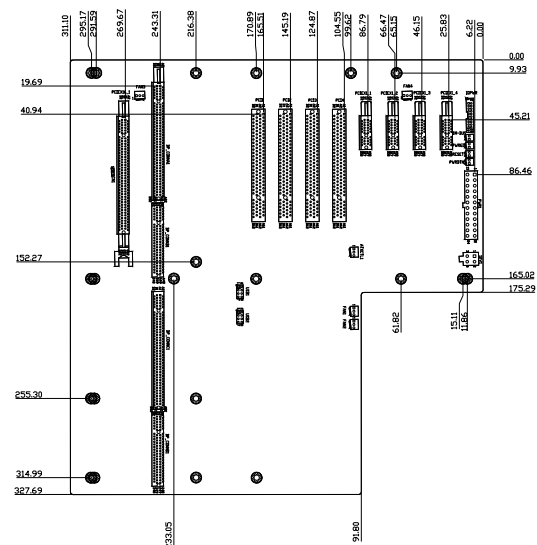


PE-10S-R40	10-slot backplane with one PCIe x16 slot, four PCIe x1 slots and four PCI slots (PCIe Gen 2.0)
RACK-305G	4U 14-slot full-size rack-mount chassis
RACK-360G	4U 14-slot full-size rack-mount chassis
RACK-3000G	4U 14-slot full-size rack-mount chassis



PXE-13S-R51	13-slot backplane with one PCIe x16 slot, three PCIe x1 slots and eight PCI slots (PCIe Gen 3.0)
RACK-3000G	4U 14-slot full-size rack-mount chassis
RACK-305G	4U 14-slot full-size rack-mount chassis
RACK-360G	4U 14-slot full-size rack-mount chassis

PE-10S2-R40



PE-10S2-R40	10-slot backplane with one PCIe x16 slot, four PCIe x1 slots and four PCI slots (PCIe Gen 2.0)
RACK-3000G	4U 14-slot full-size rack-mount chassis
RACK-305G	4U 14-slot full-size rack-mount chassis
RACK-360G	4U 14-slot full-size rack-mount chassis