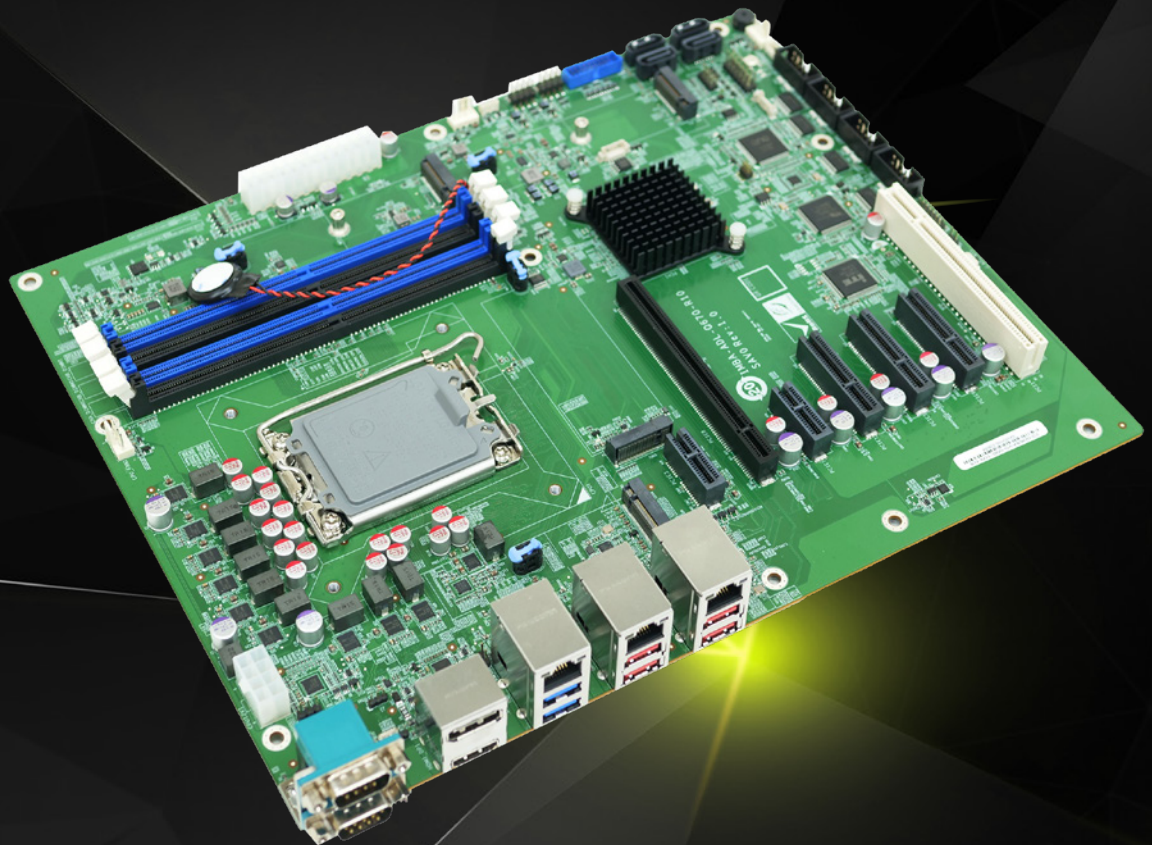


# IMBA-ADL-Q670

ATX motherboard supports LGA1700 Intel® 12th/13th/14th Generation Core™ i9/i7/i5/i3, Pentium® and Celeron® processor

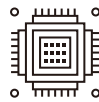
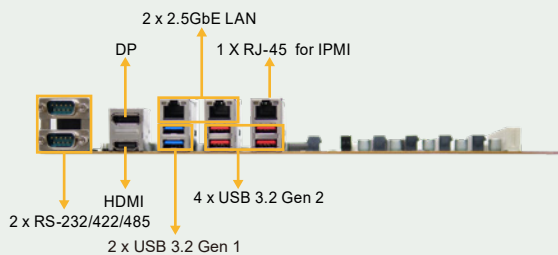
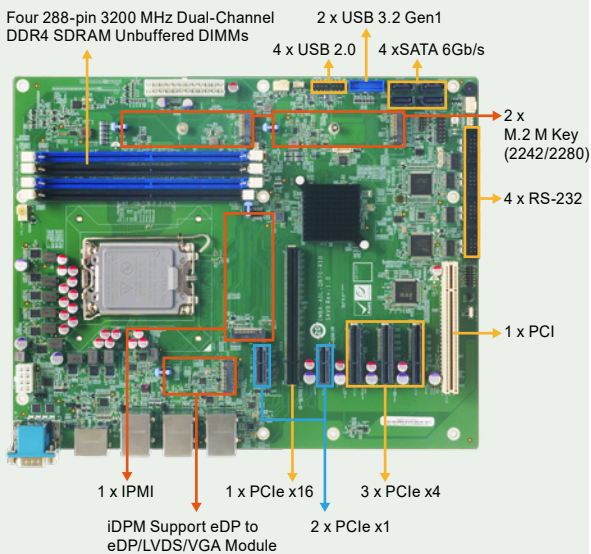
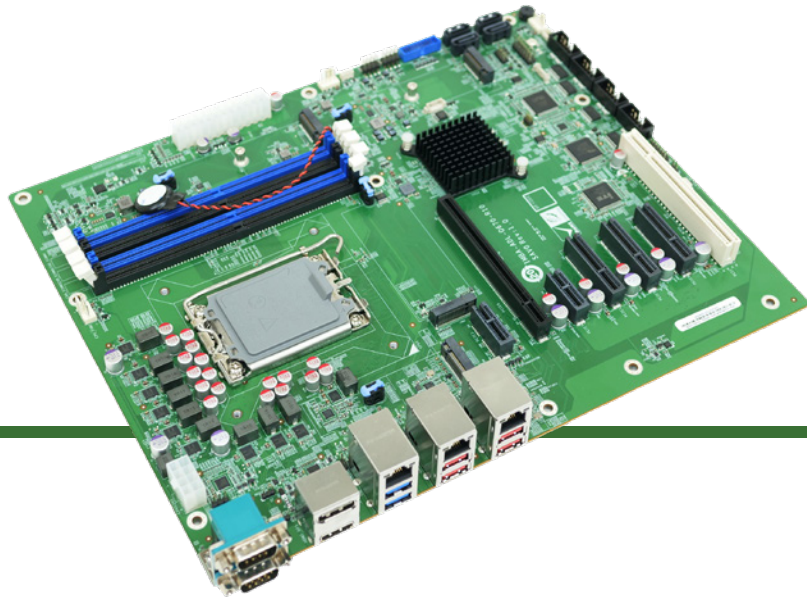
- LGA1700 Intel® 12th/13th/14th Generation Core i9/i7/i5/i3, Pentium and Celeron processor
- Dual-channel DDR4 3200MHz
- Support DisplayPort 1.4a, HDMI&iDPM module
- Support two M.2 M keys for storage
- Support one PCIe x16, three PCIe x4, two PCIe x1, one PCI for expansions



[www.ieiworld.com](http://www.ieiworld.com)

# IMBA-ADL-Q670

ATX motherboard supports LGA1700 Intel® 12th/13th/14th Generation Core™ i9/i7/i5/i3, Pentium® and Celeron® processor, DDR4, Triple independent displays, dual 2.5GbE LAN, M.2, USB 3.2, SATA 6Gb/s, IPMI, HD Audio and RoHS



## Support 12th/13th/14th Gen Intel® Core™ CPU

Support LGA1700 socket 12th/13th/14th generation Alder Lake-S/Raptor Lake-S Intel® Core™ i9/i7/i5/i3/Pentium®/Celeron® Processor (up to 125W TDP CPU), up to 24cores/32threads for outstanding Multi Threaded performanc



## Support Intel® I225V/I226V 2.5GbE Ethernet Controller

Support two RJ45 network interface via Intel® I225V/I226V 2.5GbE network controller to achieve up to 2.5GbE network transmissio



## Rich Expansion I/O

It includes one PCIe x16, three PCIe x4 ,two PCIe x1 and one PCI slots for functional expansions like graphics cards, LAN cards or motion control cards



## Support Four SATA for Storage

It supports 4 x SATA 6Gb/s, and RAID 0/1/5/10 supported. Otherwise, there are 2 x M.2 M key with PCIe signal support NVMe storage



# IMBA-ADL-Q670 Block Diagram

