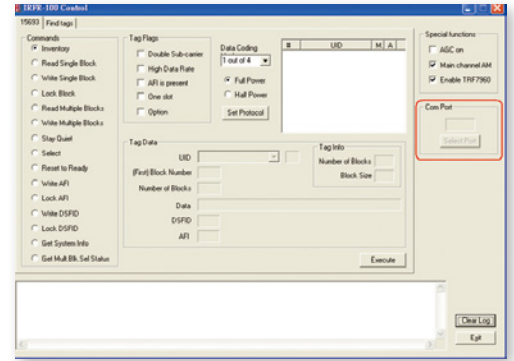


A. Built-in 13.56 MHz Mifare RFID Reader



IEI RFID Software Development Kit

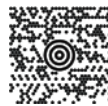
- COM Port Settings and Activation Area**
 Allows the user to select the serial port that communicates with the RFID reader module.
- Commands Area**
 Displays various command options for user to select.
- Data Input Area**
 The data input area is where the user enters block number, key, key data, and other information required by certain commands.
- Raw Data Display Area**
 Shows all communication logs and responses of the executed commands.
- Mifare Card ID Display Area**
 Displays the Mifare card ID when the Mifare card is detected.
- Error Code Display Area**
 Shows the error message when an error occurs.

Model	AFL3-MF-RFID-KIT02-R10	
Support Protocol	ISO 15693/ISO 14443A/ISO 14443B	
RF Frequency	13.56 MHz	
RFID IC	TI TRF7960	
Operating Distance	2-3cm	
Interface	USB	
Driver Support	Windows® 2000 Windows® XP Windows® 7/8 Windows® 10	Windows® Server 2003 Windows® Server 2008 Windows® Server 2008 R2 (x86 and x64)

B. 1D/2D Barcode Reader

Modularized 1D/2D Barcode Scanner and Easy to Assemble

- Accurately decodes all 1D and 2D codes, even wrinkled, damaged or poorly printed
- 752×480 CMOS sensor captures high resolution images for decoding
- Horizontal 42° and Vertical 27.5° large scanning area



Technology	1D Code	2D Code
Read Condition	20 to 25 characters	100 to about 2,000 characters

Efficient Scanning Performance

- Area-scanning features non-direction reading drive scanning performance
- 120 mm scanning distance

