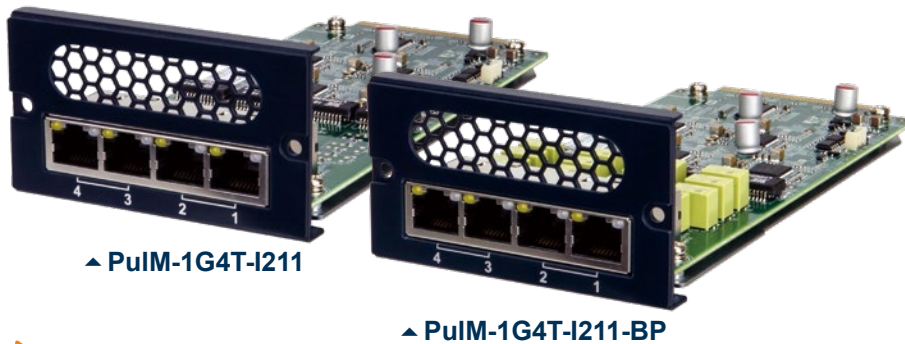


# PuIM-1G4T-I211

Intel® Ethernet Controller I211 based Network Interface Card with 4 x 1GbE RJ-45 by 4 PCIe 2.0 x2 Interface



▲ PuIM-1G4T-I211

▲ PuIM-1G4T-I211-BP

## Features

- 4 x Intel® Ethernet Controller I211-AT
- 4 ports RJ-45 connector
- 4 PCIe 2.0 x 2
- LAN Bypass (PuIM-1G4T-I211-BP)
- RoHS compliant

## Specifications

Model Name	PuIM-1G4T-I211	PuIM-1G4T-I211-BP
Form Factor	IEI Networking Module - PuIM	
NIC	Intel® Ethernet Controller I211-AT	
LAN Bypass	No	Yes, two pairs
LAN Interface	RJ-45	
Ports	4 x Intel® I211-AT Ethernet Controller	
Host Interface	4 PCIe 2.0 x2	
Storage Temp.	-20°C ~ 75°C (-4°F ~ 167°F)	
Operating Temp.	0°C ~ 40°C (32°F ~ 104°F)	
Humidity	5% ~ 90% RH, Non-condensing	
Dimensions (mm)	165.50 (L) x 77.8 (W) x 44.2 (H)	
Compliance	RoHS	

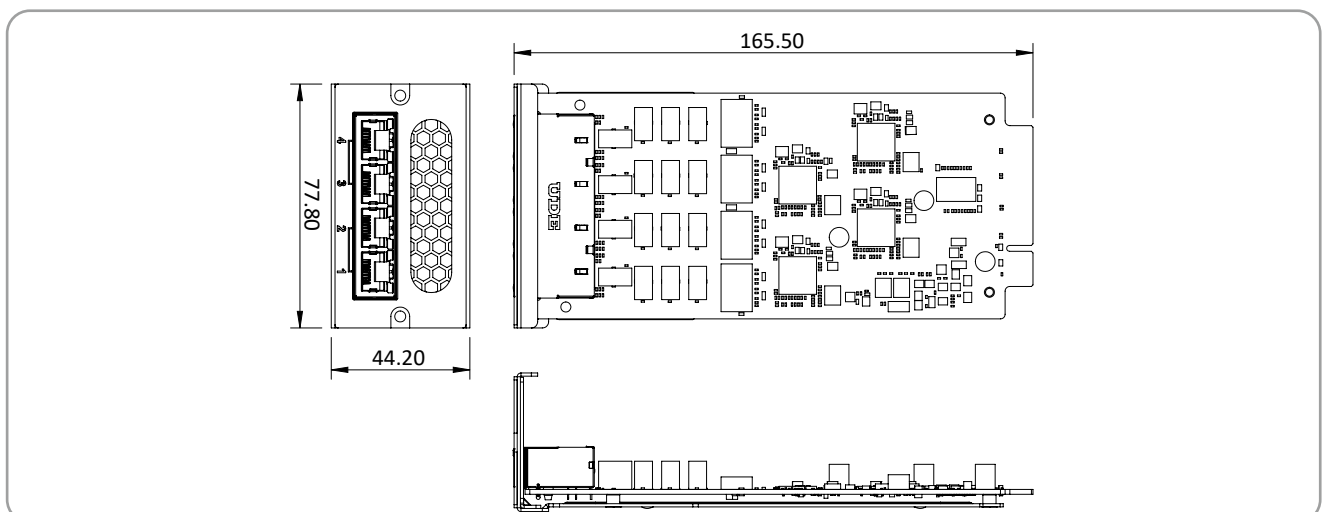
## Packing List

1 x PuIM-1G4T-I211 or PuIM-1G4T-I211-BP module	1 x L-shaped T10 Plum Wrench
2 x Trox Screws	1 x QIG

## Ordering Information

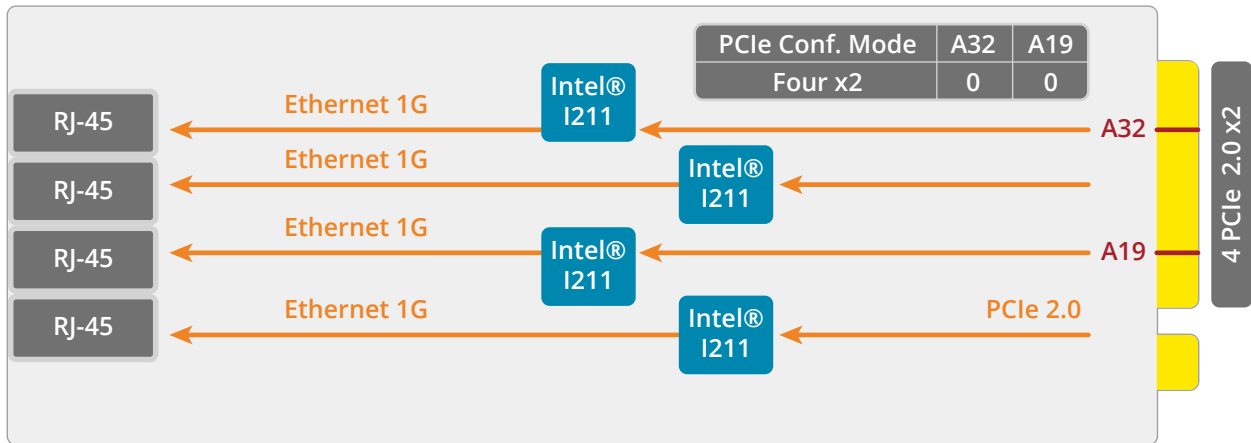
Part No.	Description
PuIM-1G4T-I211-R10	Intel® I211 Ethernet controller based network interface card with four 1GbE RJ-45 without bypass, four PCIe 2.0 x2 interfaces, RoHS
PuIM-1G4T-I211-BP-R10	Intel® I211 Ethernet controller based network interface card with four 1GbE RJ-45 with bypass function, four PCIe 2.0 x2 interfaces, RoHS

## Dimensions (Unit: mm)

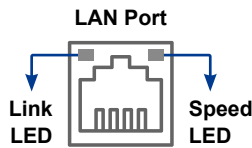
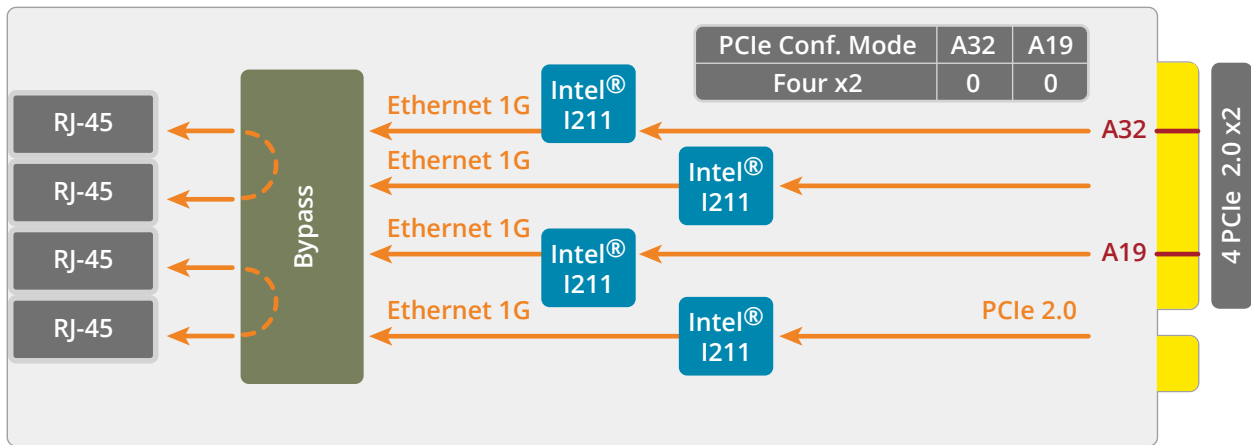


## Block Diagram

### ▼ PuIM-1G4T-I211 Block Diagram



### ▼ PuIM-1G4T-I211-BP Block Diagram



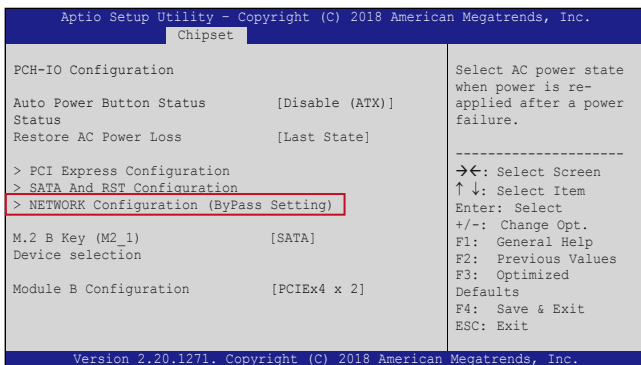
LED	State	Description
Link (Left)	Yellow <span style="color: yellow;">■</span>	Active
	Green <span style="color: green;">■</span>	1 Gbps data rate
Speed (Right)	Orange <span style="color: orange;">■</span>	100 Mbps data rate
	Off	Bypass function (PuIM-1G4T-I211-BP)

## Bypass Configuration in BIOS

Some PuIM modules support bypass. To enable/disable bypass function, configure the BIOS menu of the PUZZLE series as described below.

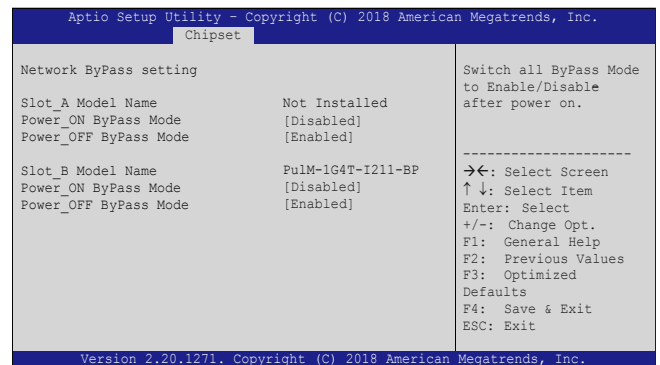
### Step 1

Go to Chipset → PCH - IO Configuration → NETWORK Configuration (ByPass Setting)



### Step 2

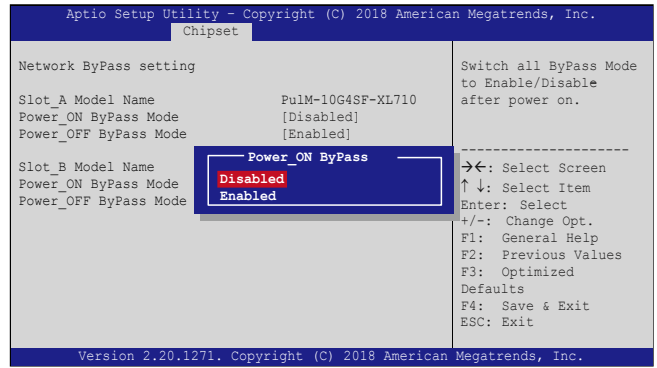
The **Network ByPass Setting** menu appears. The model names of the PuIM module installed in the PUZZLE series are shown.



**Step 3**

Configure the Power\_ON ByPass Mode and the Power\_OFF ByPass Mode BIOS options to enable/disable bypass function of the installed PuIM modules.

PUZZLE System	Power_ON Bypass Mode		Power_OFF Bypass Mode	
	Disabled	Enabled	Disabled	Enabled
BIOS Setting	Disabled	Enabled	Disabled	Enabled
PuIM Bypass Modules	Close	Open	Close	Open



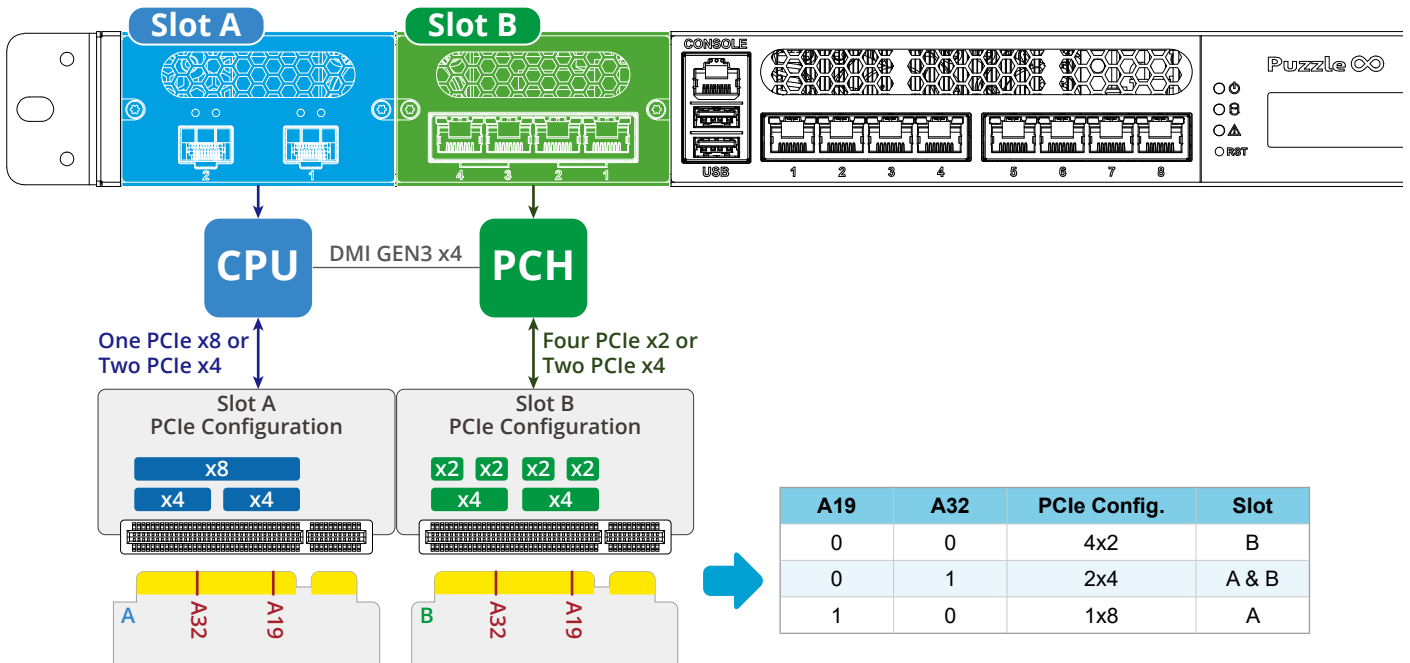
**Step 4**

Press **F4** to save and exit the BIOS menu. The PUZZLE series will reboot with the new settings.

**Hardware Installation**

Install the PuIM-1G4T-I211 networking module into the slot of the PUZZLE series. The Slot A supports 8 lanes from CPU (1 PCIe x8 or 2 PCIe x4); the Slot B supports 8 lanes from PCH (2 PCIe x4 or 4 PCIe x2).

- When the PuIM-1G4T-I211 is installed into the Slot A, only two LAN ports (port 1 & port 3) are active.
- When the PuIM-1G4T-I211-BP is installed into the Slot A, only two LAN ports (port 1 & port 3) are active; however, the 2-pair bypass is still available.



**IEI Integration Corp.**

No. 29, Zhongxing Rd, Xizhi Dist., New Taipei City 221, Taiwan  
 TEL: +886-2-8691-6798 / +886-2-2690-2098  
 sales@ieiworld.com www.ieiworld.com

