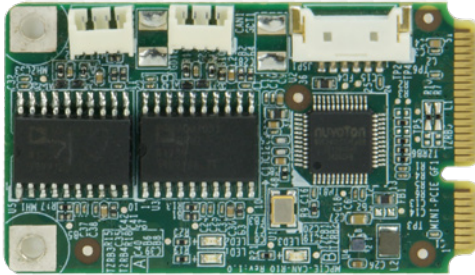


MPCIE-CAN-R10

USB to dual isolated CANbus 2.0B Module

**Packing List**

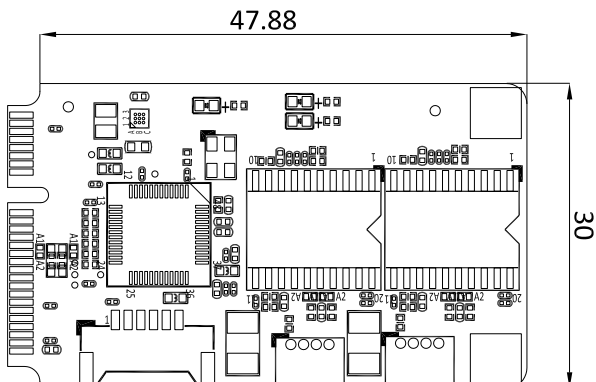
- 1 x MPCIE-CAN module
- 2 x DP9 cable
- 1 x QIG

Specifications

- ◆ Form-factor: mPCIe full-size
- ◆ Input I/F: Minipcie interface (USB interface)
- ◆ Communication Baud Rate: 50/125/250/500/1000K @ 40meter
- ◆ Host Site Connector: Internal USB port: Mini PCIe via USB
- ◆ Output I/F: 2 x CANBus 2.0B port module with isolating (optional isolation)
- ◆ CANBus Connector: 1.25 mm, 2 x 4-pins(GND, CAN_H ,CAN_L) male type wafer box
- ◆ Support Voltage and Current : 5.0 V
- ◆ Output Connector : D-Sub 9P to 1 x 4P-1.25 mm + G-TEM, L=15cm
- ◆ LED Status: D1 Green, Power on/off LED
D2 Red, CAN-1 Tx LED
D3 Red, CAN-2 Tx LED
- ◆ Temperature Operation: -20°C to +60°C
Storage: -30°C to +70°C
- ◆ OS support: Windows /Linux
- ◆ Dimensions (L x W x H): 30 x 50.9 x 6 mm
- ◆ EMI:
 - Complies with EN61000-4-5 2.5kV Surge protection
 - Complies with IEC 60950-1:2005 + A1: 2009 + A2:2013 2.5kV HiPOT protection
 - Complies with EN61000-4-2 (ESD) Air-15kV, Contact-8kV

Ordering Information

Part No.	Description
MPCIE-CAN-R10	PCI Express Mini Dual CAN Bus module, Full size, RoHs, R10

**MPCIE-CAN
Dimensions (mm)****DP9 cable
Dimensions (mm)**